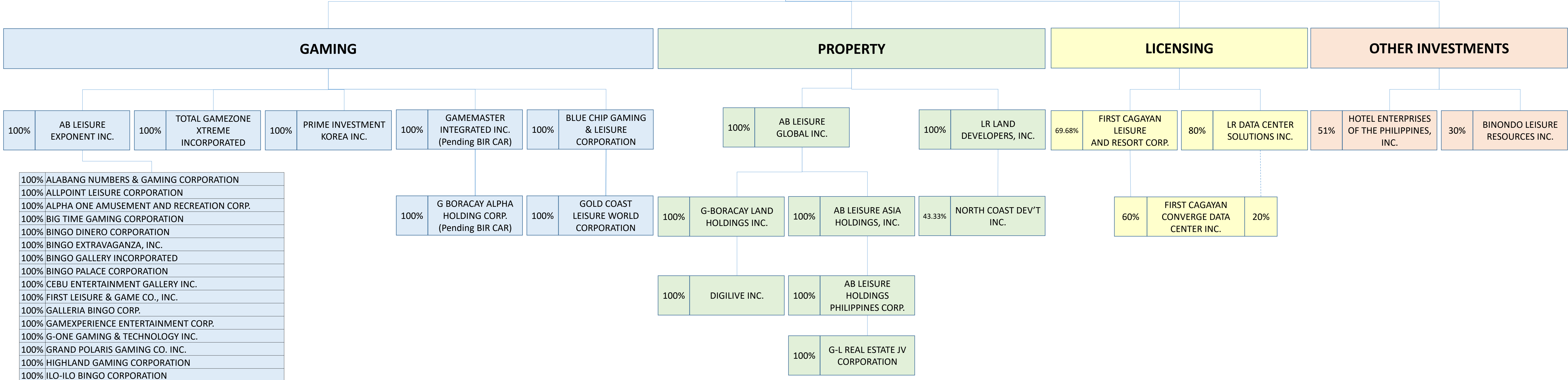


# MAP OF CONGLOMERATE As of 31 December 2023

## DIGIPLUS INTERACTIVE CORP.



100%	ALABANG NUMBERS & GAMING CORPORATION
100%	ALLPOINT LEISURE CORPORATION
100%	ALPHA ONE AMUSEMENT AND RECREATION CORP.
100%	BIG TIME GAMING CORPORATION
100%	BINGO DINERO CORPORATION
100%	BINGO EXTRAVAGANZA, INC.
100%	BINGO GALLERY INCORPORATED
100%	BINGO PALACE CORPORATION
100%	CEBU ENTERTAINMENT GALLERY INC.
100%	FIRST LEISURE & GAME CO., INC.
100%	GALLERIA BINGO CORP.
100%	GAMEXPERIENCE ENTERTAINMENT CORP.
100%	G-ONE GAMING & TECHNOLOGY INC.
100%	GRAND POLARIS GAMING CO. INC.
100%	HIGHLAND GAMING CORPORATION
100%	ILO-ILO BINGO CORPORATION
40%	INSULAR GAMING CORP.
90%	ISAROG GAMING CORPORATION
100%	MANILA BINGO CORPORATION
100%	METRO GAMING ENTERTAINMENT GALLERY INC.
55%	NEGRENSE ENTERTAINMENT GALLERY INC.
100%	ONE BINGO PAVILION INC.
95%	ONE BINGO PLACE, INCORPORATED
100%	RIZAL GAMING CORPORATION
100%	SG AMUSEMENT AND RECREATION CORP.
100%	SOUTH BINGO CORPORATION
100%	SOUTH ENTERTAINMENT GALLERY INCORPORATED
60%	SUMMIT BINGO, INC.
100%	TOPMOST GAMING CORPORATION
100%	TOPNOTCH BINGO TREND INC.
100%	WORLDWIDE LINKS LEISURE AND GAMING CORPORATION

**BINGOPLUS FOUNDATION INC.**